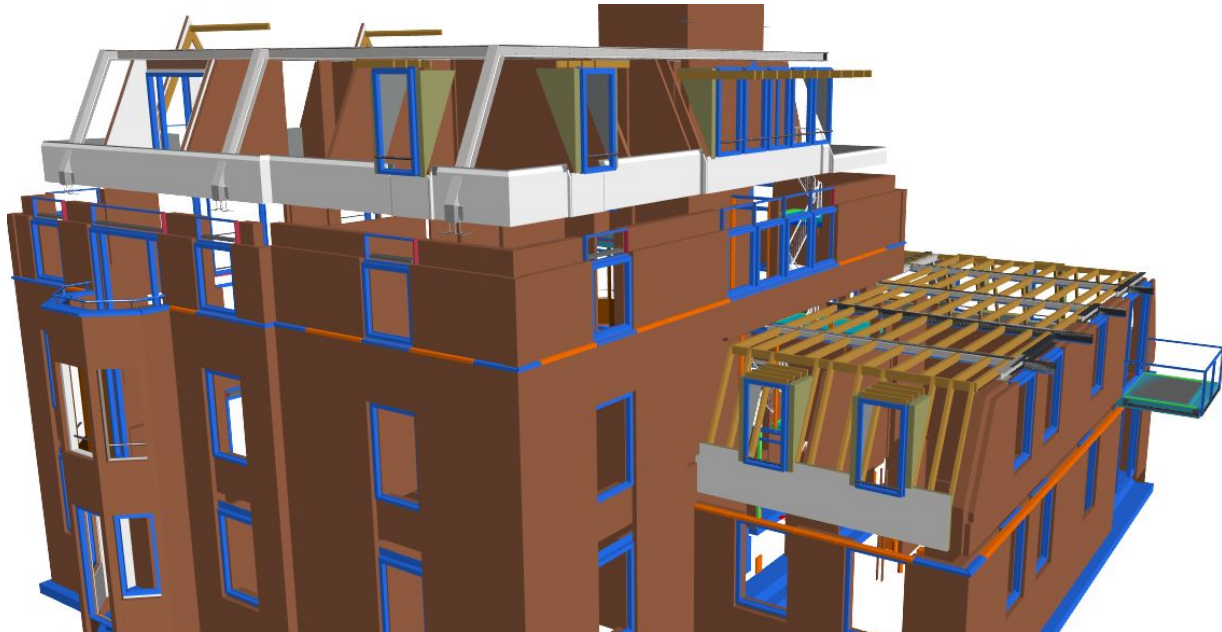


## Interdisciplinary Project (IDP)

### Machine-learning approach: design assistant



The decisions taken in the early design stages form the basis for the subsequent stages and steer the project's success. For example, deciding on the window-to-wall ratio or wall materials has high impact on the building performance and cost. However, in the early stages, it is uncertain how a design might evolve due to lack of information. Therefore, extracting the knowledge gained from previous projects can assist in developing better designs.

In this project we want to analyze building information and their performance in order to provide assistance and predictions to the designer in the early design stages.

#### Requirements

- Basic experience in machine-learning
- Motivation to analysis different types of data formats
- The topic can be customized for one or multiple students

#### Interested?

Please contact: [Jimmy Abualdenien](mailto:jimmy.abualdenien@tum.de), [jimmy.abualdenien@tum.de](mailto:jimmy.abualdenien@tum.de)

